



# Amity School District

Dedicated To Excellence In Education

Capital Bond Program Newsletter

# JANUARY 2025



## ***GENERAL PROGRAM UPDATE***

As we begin the new year, the Amity School District Bond Program has reached several significant milestones. A major achievement for January was successfully achieving full dry-in status for the middle school and high school gymnasium. This marks a critical turning point in the project, allowing interior work to proceed without concerns about weather-related disruptions.

Additionally, we have taken delivery of the elevator, which will soon be installed as part of the middle school infrastructure. This is a crucial component in ensuring accessibility and compliance with modern building standards.

With these structural advancements completed, the focus has now shifted towards interior finishes, including drywall installation, electrical work, and mechanical system integrations. As we progress into the next phases of construction, we are steadily moving closer to the completion of these long-anticipated projects, ensuring safe, modern, and well-equipped educational spaces for the Amity community.

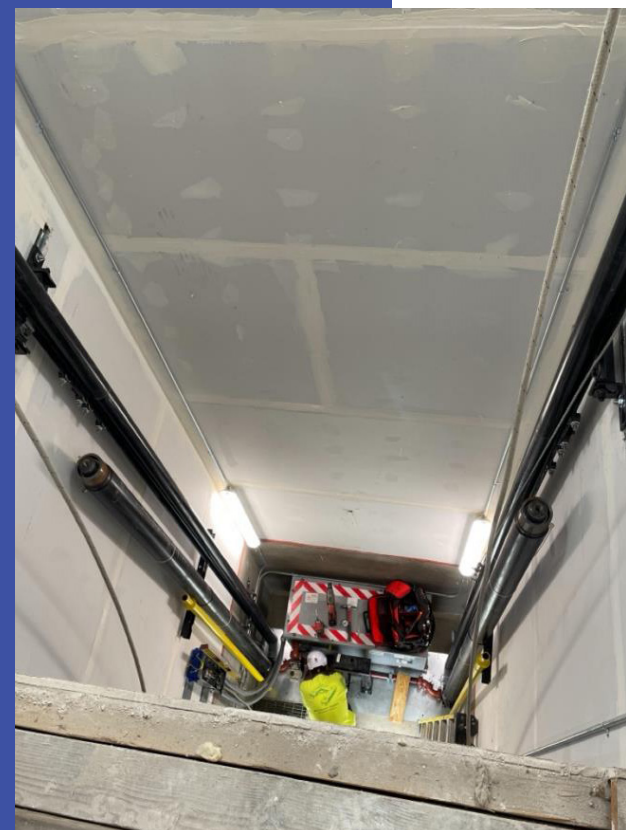




## CURRENT ACTIVITIES

January has been a highly productive month, with major progress seen across multiple areas of the bond program:

- **Full Dry-In Achieved:** Both the middle school addition and high school gymnasium are now completely enclosed, ensuring protection from winter weather and allowing uninterrupted interior work.
- **Elevator Delivery:** The middle school elevator has been delivered, and crews are preparing for its installation. This component is vital for ensuring ADA compliance and accessibility within the new facility.





- **Drywall Installation:** Interior drywall and mudding are well underway, particularly in classrooms and administrative spaces.

- **Mechanical, Electrical, and Plumbing (MEP) Progress:** Rough-ins for electrical and HVAC systems continue, keeping pace with the construction schedule.



## ACTIVITIES SCHEDULED FOR NEXT PERIOD

February will see a major shift in focus toward refining interior spaces and critical system installations. Planned activities include:

- **Elevator Installation:** Now that the elevator has been delivered, crews will move forward with installation.
- **Interior Painting & Finishes:** As drywall installation nears completion, painting will begin, transforming the interior into a more finished and functional space.
- **Finalizing MEP Systems:** Continued installation and testing of HVAC, electrical, and plumbing systems to prepare for final inspections and commissioning.
- **Flooring & Ceiling Work:** Once interior finishes progress, teams will begin laying flooring and installing ceiling tiles in completed classrooms and common areas.

By keeping the schedule tight and maintaining strong coordination between different construction teams, we anticipate making significant progress throughout February, bringing the project another step closer to completion.



## HIGHLIGHTS, CHALLENGES, SOLUTIONS

As we enter the coldest part of the season, the construction team continues to adjust and address the challenges presented with rain and colder temperatures. While significant milestones are being achieved, weather conditions, and scheduling challenges require proactive solutions.

### CHALLENGES

**Cold Weather & Moisture Control:** Even with full dry-in status, colder temperatures pose challenges for interior work, particularly drywall finishing and paint applications.

### SOLUTIONS

**Temporary Heating & Humidity Control:** To counteract cold weather, additional heating and dehumidification equipment is being utilized inside the buildings to maintain adequate conditions for finishing work.



A key commitment of our project has been to engage and support the local economy by involving local vendors and contractors in the construction process. This month, we continued to honor that commitment, with a significant portion of our contracts awarded to businesses within the local community. This approach not only bolsters the local economy but also builds a sense of community ownership and pride in the project. It's a reflection of our belief that the best results come from working closely with those who share a direct stake in the success of our schools.

### *LOCAL VENDORS AND CONTRACTORS WORKING ON SCHOOL PROJECTS*

- HMK Company
- Geotechnical Resources, Inc.
- TerraCalc Land Surveying
- Warrior Construction
- GT Landscape Solutions
- S&S Electrical
- Robert Lloyd Sheet Metal
- Soriano
- Southtown Glass
- Salem Heating & Sheet Metal
- JB Insulation
- Davidsons Masonry
- Valley Flooring
- Lile International

