



Amity School District

Dedicated To Excellence In Education

Capital Bond Program Newsletter

DECEMBER 2024



GENERAL PROGRAM UPDATE

As we dive deeper into the winter months, bringing rain and cold temperatures, the construction team has remained focused on completing critical weatherproofing activities at both the middle school addition and the high school gymnasium. With window installations almost complete in the middle school by late December, and water resistive barriers (WRB) being completed at the high school gymnasium, the buildings are on their way to achieving 100% dried-in status. These milestones ensure the next phase of construction can progress, allowing for interior finish work and system installations, like mechanical and electrical, without significant interruptions due to the winter weather.

Successfully enclosing these buildings will allow for continued mechanical, electrical, and plumbing rough-ins, as well as the installation of insulation, drywall, and flooring in the months ahead. These steps are critical to delivering safe, modern, and functional educational spaces for the Amity community.





CURRENT ACTIVITIES

The construction team continues to progress, adjusting as they are faced with new weather challenges. The focus has remained on achieving the critical “dried in” status for the middle school addition and high school gymnasium by late December and early January, respectively.

Middle School

With window installs almost complete on the middle school addition in December, the construction team brought out a third-party window testing agency to ensure the windows had been installed per design and there would be no early-failure of the windows systems, keeping students and staff safe, warm, and dry. Additionally, insulation and rough-ins for plumbing, HVAC, and fire protection are complete, drywall installation has started where the building is closed in, and brick veneer work is ongoing.



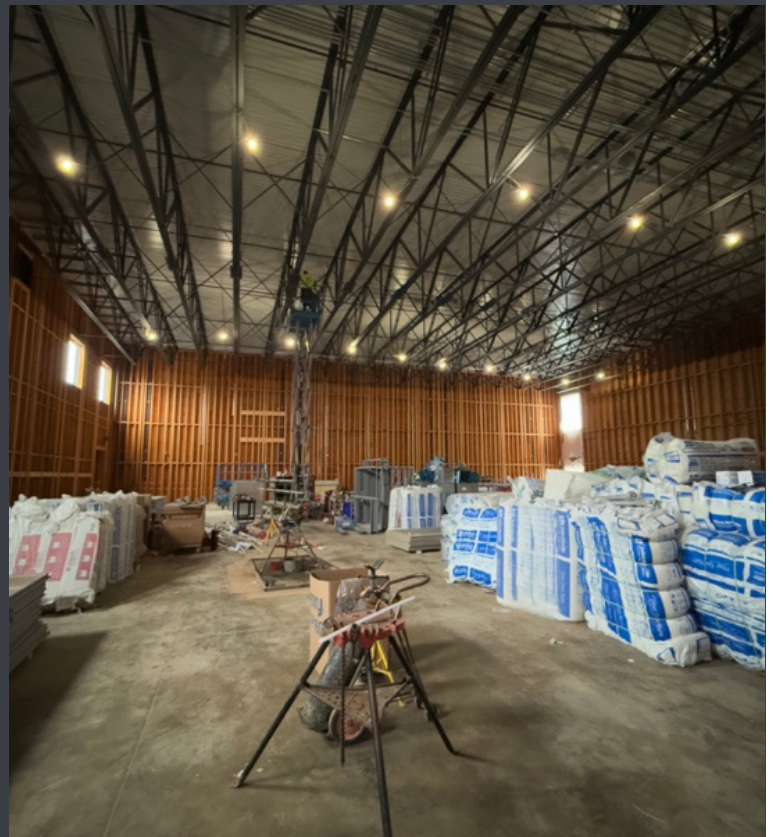


High School Gymnasium

Continued progress on the high school gymnasium has included substantial work on exterior WRBs and roof assemblies. Remaining tasks, such as sealing windows and completing WRBs, are expected to be complete around the beginning of 2025. Once enclosed, crews will transition to interior finishes and systems integration.

Classroom Addition

Landscaping and final grading for sidewalks around the middle school and high school are scheduled for early 2025, ensuring accessibility and compliance with design standards.



ACTIVITIES SCHEDULED FOR NEXT PERIOD

As we transition into 2025, construction efforts will shift focus to key milestones that mark the beginning of significant interior and finishing work. With the middle school and high school gymnasium nearing “dried-in” status, the following activities are scheduled to maintain progress:

Middle School

- **Interior Finishes:** As the construction team finishes installing the windows and other weatherproofing elements, they can continue to move into interior finishes, like drywall, electrical and low voltage connections, and ceilings. Completing the building’s envelope is critical to ensuring interior finishes can both start and be completed in a timely manner.
- **Elevator Installation:** A critical piece of the middle school build out is the installation of the elevator. This work, scheduled to be completed in mid-January, is pivotal to ensuring the construction team can continue smoothly with interior finishes.

High School Gymnasium

- **Drywall and Interior Work:** As the construction crews have worked diligently to dry-in the high school gymnasium, the focus is beginning to transition to interior finishes, such as insulation and drywall. This work is expected to progress steadily throughout January.
- **Electrical Connections:** With significant electrical work needed for all the different elements of the new high school gymnasium – score boards, lights, basketball hoops – this work will play a large role in the activities we see happening in January.



HIGHLIGHTS, CHALLENGES, SOLUTIONS

As we enter the rainy season, the construction team continues to adjust and address the challenges presented with rain and colder temperatures. While significant milestones are being achieved, weather conditions, and scheduling challenges require proactive solutions.

CHALLENGES

Weather-Related Delays: Persistent rain and low temperatures have made exterior work, particularly roofing and WRB installations, more challenging. These conditions slow progress on achieving “dried-in” status for the middle school and high school gymnasium.

SOLUTIONS

Weather Mitigation: Temporary weatherproofing measures, including tarps and heated enclosures, have been employed to protect ongoing work and accelerate progress during brief periods of favorable conditions. The team has also continued to adjust work schedules to push productivity during dry weather.

Scheduling Oversight: A detailed activity breakdown and close monitoring of critical path milestones are helping the team stay on track.



A key commitment of our project has been to engage and support the local economy by involving local vendors and contractors in the construction process. This month, we continued to honor that commitment, with a significant portion of our contracts awarded to businesses within the local community. This approach not only bolsters the local economy but also builds a sense of community ownership and pride in the project. It's a reflection of our belief that the best results come from working closely with those who share a direct stake in the success of our schools.

LOCAL VENDORS AND CONTRACTORS WORKING ON SCHOOL PROJECTS

- HMK Company
- Geotechnical Resources, Inc.
- TerraCalc Land Surveying
- Warrior Construction
- GT Landscape Solutions
- S&S Electrical
- Robert Lloyd Sheet Metal
- Soriano
- Southtown Glass
- Salem Heating & Sheet Metal
- JB Insulation
- Davidsons Masonry
- Valley Flooring
- Lile International

