



**Amity School District**

Dedicated To Excellence In Education

Capital Bond Program Newsletter

**SEPTEMBER 2024**



## ***GENERAL PROGRAM UPDATE***

The Amity School District Bond Program reached a major milestone this summer with the completion of the 1965 wing renovation at the high school. The project was completed just in time for the start of the school year, thanks to the extraordinary efforts of our construction partners, who worked tirelessly to meet the tight deadline. Their dedication ensured that students and staff returned to an upgraded and modernized facility that is now better equipped to meet today's educational needs.

We would like to extend our sincere thanks to the school staff for their remarkable flexibility and understanding throughout the renovation process. The project required adjustments to the usual start-of-school routines, and staff members adapted seamlessly to these changes, ensuring that students were welcomed back into a refreshed learning environment with minimal disruption. Their patience and cooperation were instrumental in the success of this phase of the bond program.

While the renovation of the 1965 wing is complete, other major projects continue to move forward. The middle school addition and the high school competition gym are both progressing according to schedule, with structural work advancing steadily. These ongoing projects will address critical capacity needs and provide enhanced athletic facilities,

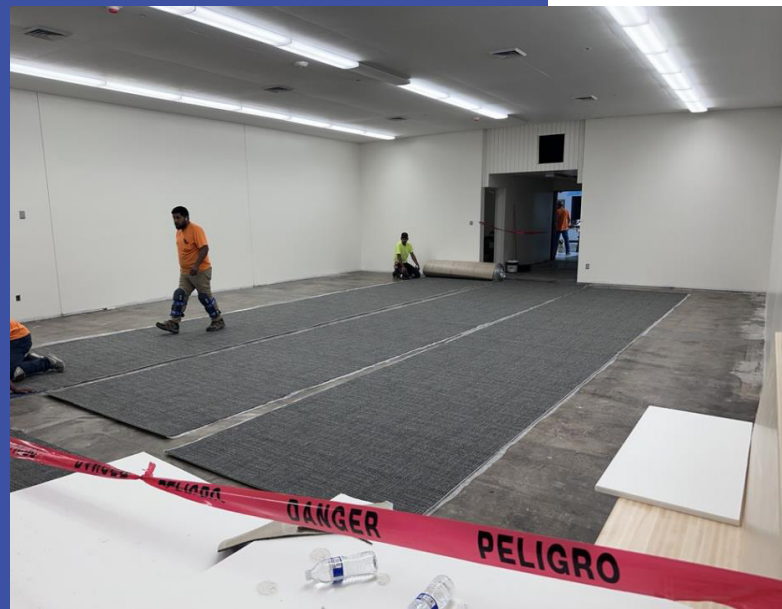




## CURRENT ACTIVITIES

With the completion of the 1965 wing renovation behind us, the focus of the Amity School District Bond Program has now shifted to ensuring the middle school addition and high school competition gym are “dried-in” before the onset of winter. This is a critical step that will allow interior work to proceed during the colder months without weather-related delays.

Efforts are currently centered on completing the exterior framing, installing roofing systems, and sealing the buildings to protect them from the elements. Both the middle school addition and the high school gym are advancing steadily, with crews working diligently to finish the exterior structural work. Achieving a fully dry facility is essential for staying on schedule and enabling the next phase of construction—interior work on classrooms, gym spaces, and supporting infrastructure.





Alongside this, mechanical, electrical, and plumbing systems are being roughed in where possible, laying the groundwork for the integration of essential building services. Our teams are coordinating closely to ensure that all these systems will be ready for final installation once the buildings are sealed.

The next few weeks will be crucial, as we focus on weatherproofing the structures before the winter rains begin. Successful completion of this phase will keep the project on track for an interior build-out through the winter and spring months.





## **ACTIVITIES SCHEDULED FOR NEXT PERIOD**

In the upcoming month, the focus of the Amity School District Bond Program will remain on ensuring that both the middle school addition and high school competition gym are completely “dried-in” before winter weather sets in. Completing the exterior work, including roofing and sealing, is critical to maintaining the project’s timeline and preparing for interior construction.

### **The construction teams will continue to concentrate on:**

- Finalizing the exterior framing and roofing installations to secure the buildings against the elements.
- Installing windows and exterior doors to complete the weatherproofing process.
- Continuing rough-ins for mechanical, electrical, and plumbing systems to keep progress steady on the internal infrastructure.

Once these facilities are weatherproof, interior work, such as drywall installation, flooring, and final system installations, can move forward without interruption during the winter months. The successful completion of this phase will ensure the project remains on schedule for a smooth transition into interior construction through the winter.



## **HIGHLIGHTS, CHALLENGES, SOLUTIONS**

### **CHALLENGES AND SOLUTIONS**

**Manpower and Coordination:** Coordinating the extensive manpower needed to complete the 1965 wing renovation on time has been a significant challenge. Ensuring that all teams work efficiently and that there are no delays or overlaps in the schedule requires meticulous planning and execution.

### **SOLUTIONS**

**Close Collaboration with Contractors:** We maintain close communication and collaboration with our contractors to ensure that everyone is aligned with the project goals and timelines. Regular meetings and updates help address any issues promptly and keep the project on track.



A key commitment of our project has been to engage and support the local economy by involving local vendors and contractors in the construction process. This month, we continued to honor that commitment, with a significant portion of our contracts awarded to businesses within the local community. This approach not only bolsters the local economy but also builds a sense of community ownership and pride in the project. It's a reflection of our belief that the best results come from working closely with those who share a direct stake in the success of our schools.

### *LOCAL VENDORS AND CONTRACTORS WORKING ON SCHOOL PROJECTS*

- HMK Company
- Geotechnical Resources, Inc.
- TerraCalc Land Surveying
- Warrior Construction
- GT Landscape Solutions
- S&S Electrical
- Robert Lloyd Sheet Metal
- Soriano
- Southtown Glass
- Salem Heating & Sheet Metal
- JB Insulation
- Davidsons Masonry
- Valley Flooring
- Lile International

