



Amity School District

Dedicated To Excellence In Education

Capital Bond Program Newsletter

MAY 2024

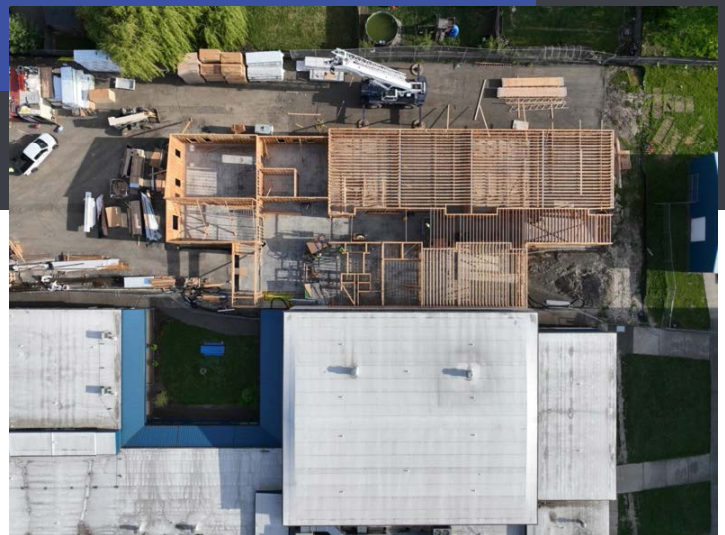


GENERAL PROGRAM UPDATE

Advancement of the construction for the Amity School District Bond Program in April included many visual indicators for the progress occurring onsite. Most notably, the vertical framing began at both the new classroom addition and the high school gym, giving shape to the future facilities.



Framing in progress at the new middle school addition.



Classrooms at the middle school addition have taken shape.





CURRENT ACTIVITIES

- **Highschool Gym:** The gym's concrete slab was poured mid-April. This critical horizontal construction milestone allowed for vertical construction to begin with structural framing starting towards the end of the month.
- **Middle School Classrooms:** Structural framing at the middle school addition began in April, with significant progress visible by month's end. First floor classrooms have taken shape with second floor assembly expected to begin in May.
- **Summer Renovation Project:** Members from the design and construction teams walked the 1965 wing in late April in preparation for the summer renovation work. This building walkthrough allowed the team to visualize the work that needs to occur and helped prepare the team for a smooth transition into the renovations once classes are out for the school year.



NEW HIGH SCHOOL/MIDDLE SCHOOL ENTRY



NEW COMPETITION GYM



ACTIVITIES SCHEDULED FOR NEXT PERIOD

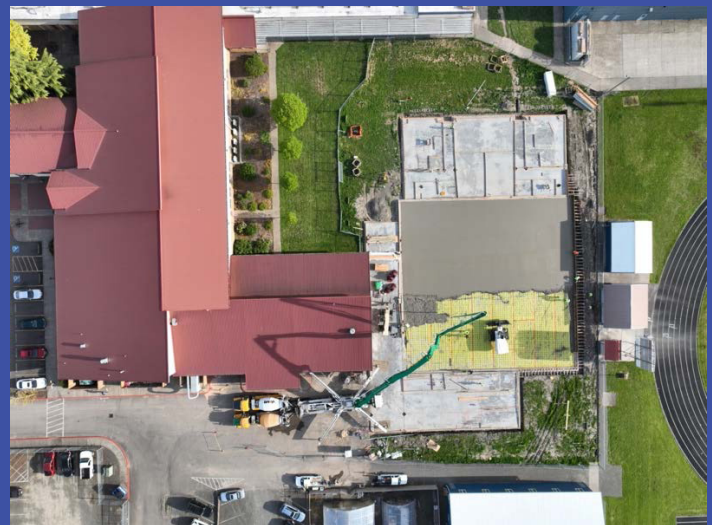
The month of May will see plenty of vertical construction with wall assembly occurring at the new high school gym. Wall assembly will continue at the middle school building addition as well as work on the second floor prior to vertical wall construction for the upper level of this new building.

The construction team will also be continuing to gear up for the summer renovation work and will increase coordination meetings in the upcoming month to ensure a smooth transition from the end of the school year into the start of summer construction work.

HIGHLIGHTS, CHALLENGES, SOLUTIONS

Highlights: Completion of the concrete slab pour at the new high school gym was a huge milestone achievement for the team and a clear sign of the collaboration occurring on a daily basis to ensure the project stays on track and on schedule. With slabs at both the gym and the middle school addition poured and curing by the end of April, it leaves the path clear for the construction team to move into vertical construction per schedule. This means clearly visible progress with walls in place to help the students and the community begin to envision what the future looks like on campus at Amity Middle and High School.

Conclusion: The month of April saw continued progress and consistent efforts by the construction team. Looking towards the coming months, the Amity School District Bond Program expects to stay on schedule, continuing to enhance the campus for current and future students to flourish and thrive. Significant progress is expected in the summer months in the new buildings as well as with the interior renovations of the existing school building, with several improvements ready for the '24-'25 school year.



Concrete pour in progress at the new high school gym.



A key commitment of our project has been to engage and support the local economy by involving local vendors and contractors in the construction process. This month, we continued to honor that commitment, with a significant portion of our contracts awarded to businesses within the local community. This approach not only bolsters the local economy but also builds a sense of community ownership and pride in the project. It's a reflection of our belief that the best results come from working closely with those who share a direct stake in the success of our schools.

LOCAL VENDORS AND CONTRACTORS WORKING ON SCHOOL PROJECTS

Currently, 27% of the awarded contracts have been awarded to local contractors (30 Mile Radius), which amounts to \$7,649,187 of the \$28,633,513 awarded.

- HMK Company
- Geotechnical Resources, Inc.
- TerraCalc Land Surveying
- Warrior Construction
- GT Landscape Solutions
- S&S Electrical
- Robert Lloyd Sheet Metal
- Soriano
- Southtown Glass
- Salem Heating & Sheet Metal
- JB Insulation
- Davidsons Masonry
- Valley Flooring
- Lile International

